

Building materials: brick, beechwood, concrete, corrugated metal

Jesuit Community Center, Fairfield, Connecticut 2009-2010. Community Center and residence for twelve Jesuits on Fairfield University's Campus. The building is on a sloped site and positioned near old growth beech trees. The main public functions are organized under one roof, while the private residences extend along the contour of the hillside with views onto the campus or to the interior courtyard that is carved into the landscape. Public functions include: administration offices, a chapel, reception and dining hall. Private amenities include: residences, library, kitchen, and informal gathering spaces.

Designer/ Lead Draftsperson , Schematic Design - Construction Documentation, Design assistant to the project architect and principal in charge including drawings for permitting, design development and construction documentation.

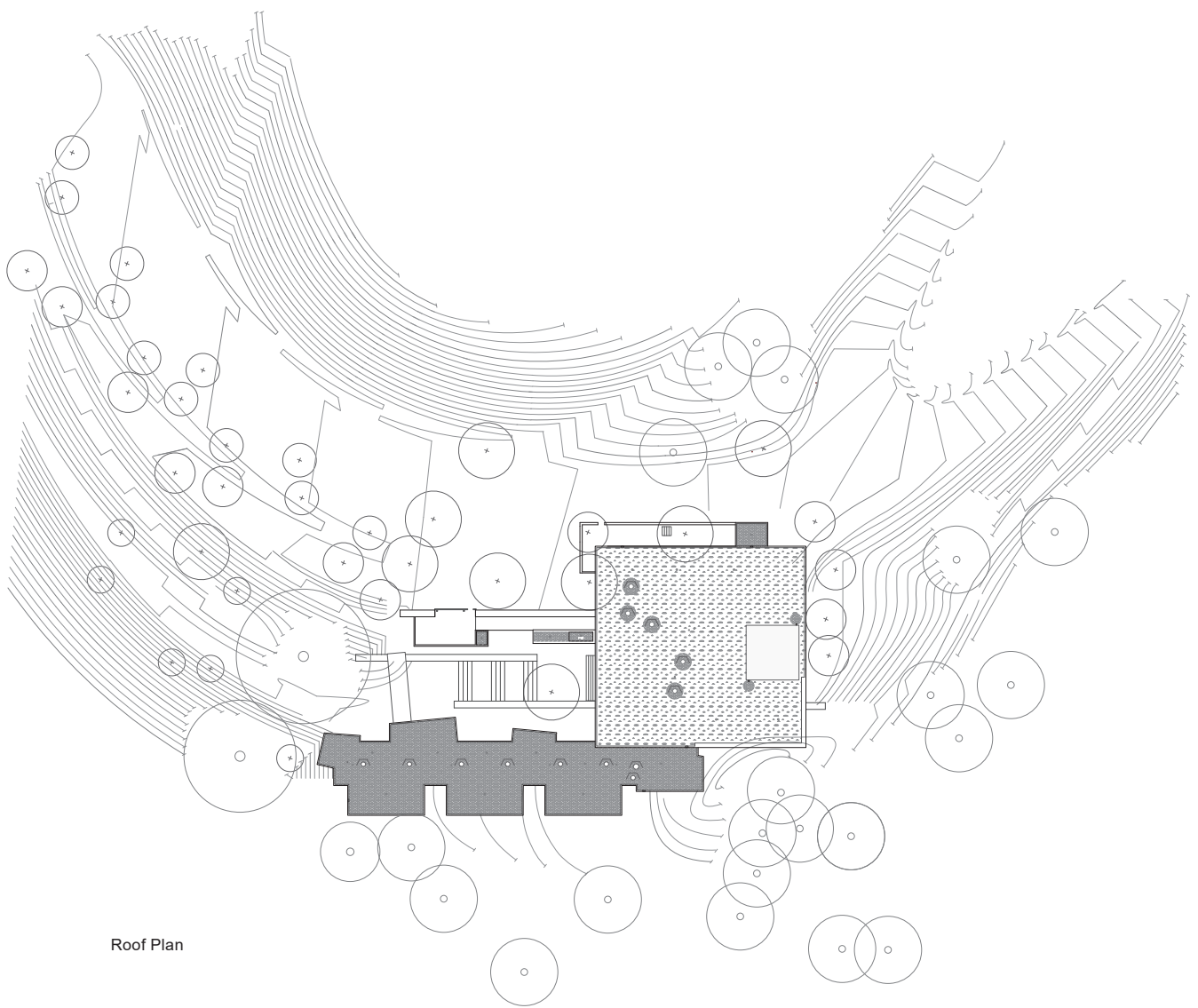
GOA Gray Organschi Architecture w/ Reed Hildebrand
21,000 SF (1,950 SQM)

*2012 National AIA Housing Award

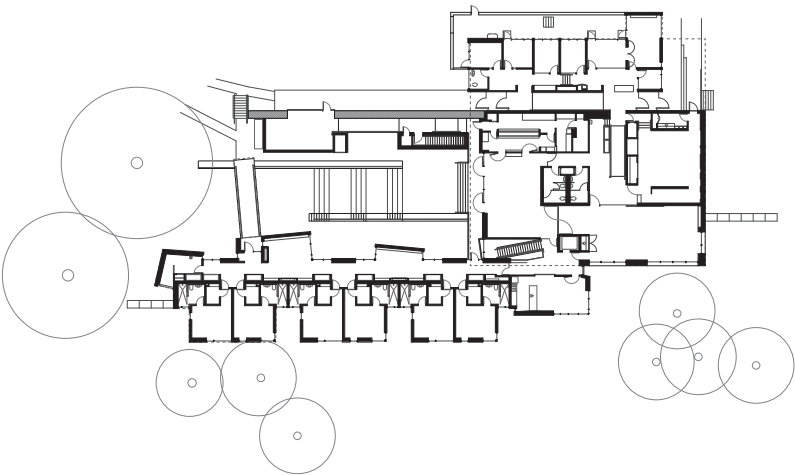
*2010 Connecticut AIA Design Award



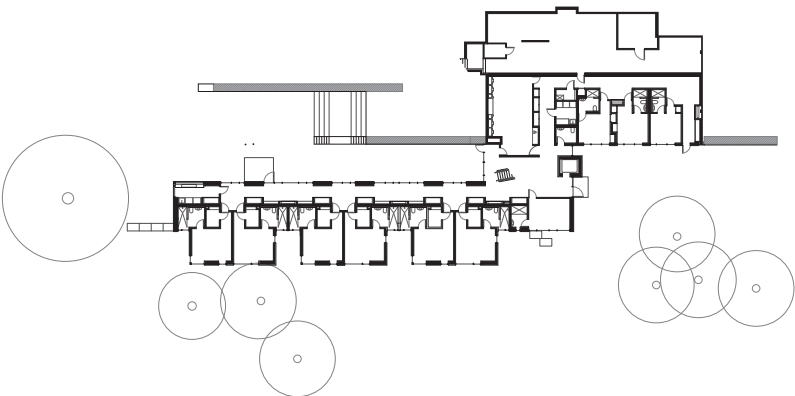
Main entry and Chapel facade
(Image Credit: Robert Benson)



Roof Plan



Level +1



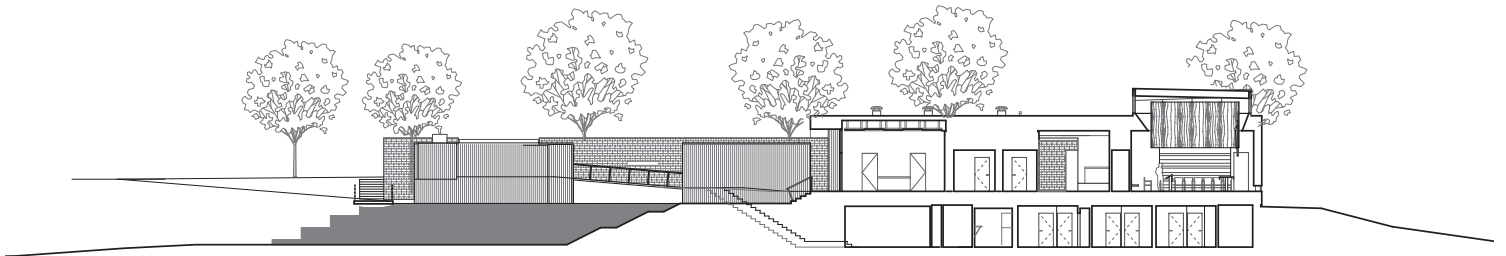
Level +0



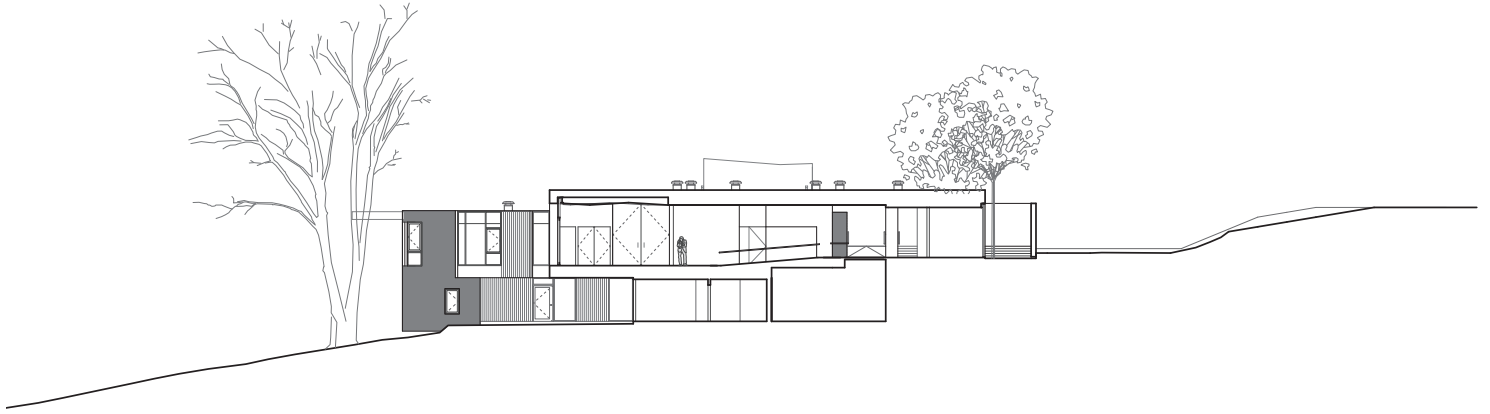
Exterior at Community Center and Residential facade
(Image Credits: Robert Benson)



End facade at residential wing



South Elevation at Residence wing and Community Center
Section at interior courtyard, library and chapel (above)



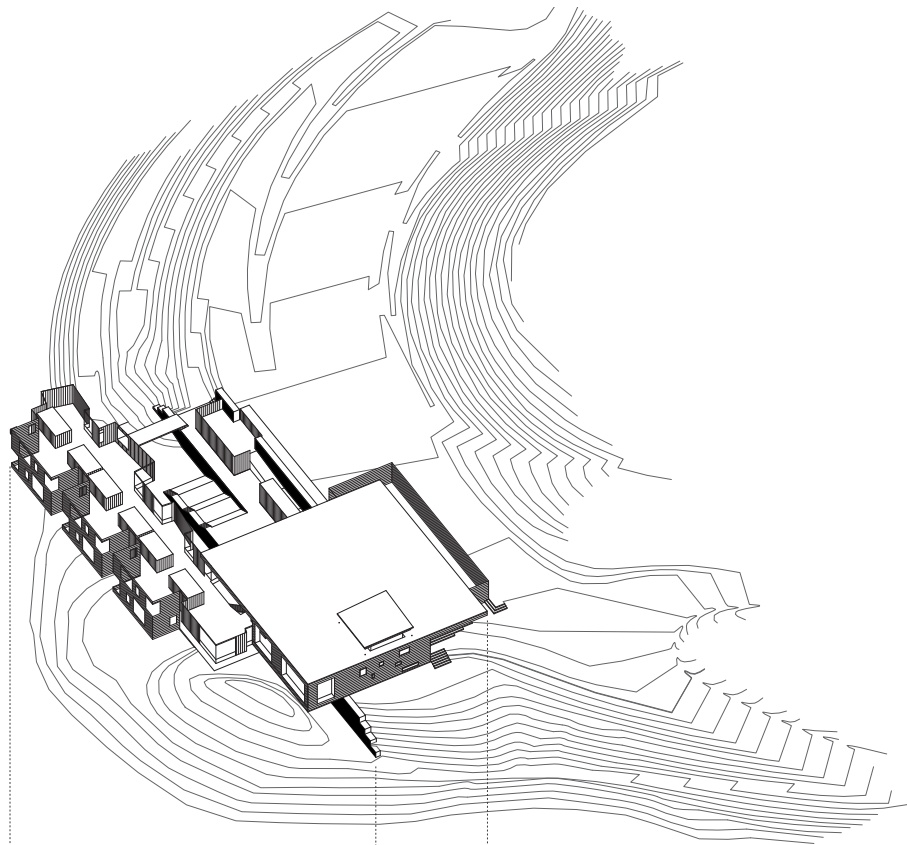
East Elevation at Chapel and Main Entry
Cross section at entry corridor (*above*)



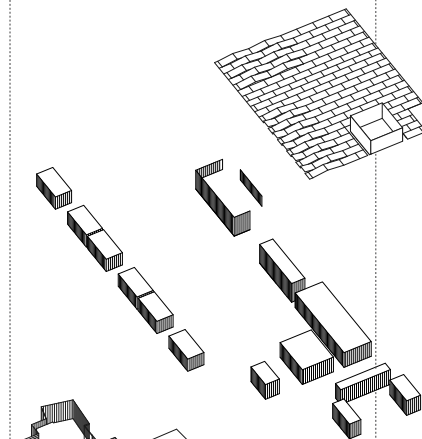
Interior at entry corridor
(Image Credits: Robert Benson)



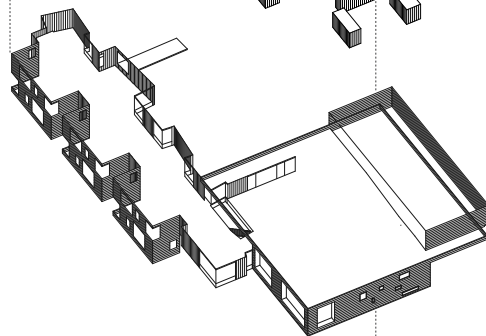
Interior at Chapel



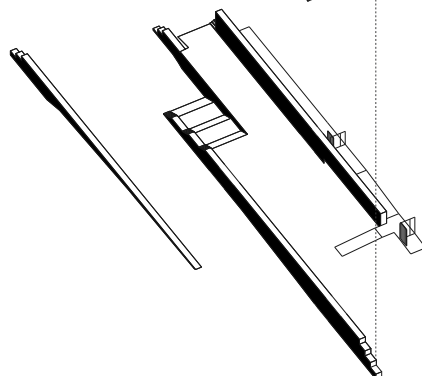
Building axonometry



Center & chapel ceiling



Interior volumes



Exterior envelope

Earthworks



Model from Northwest



Model from Southwest