

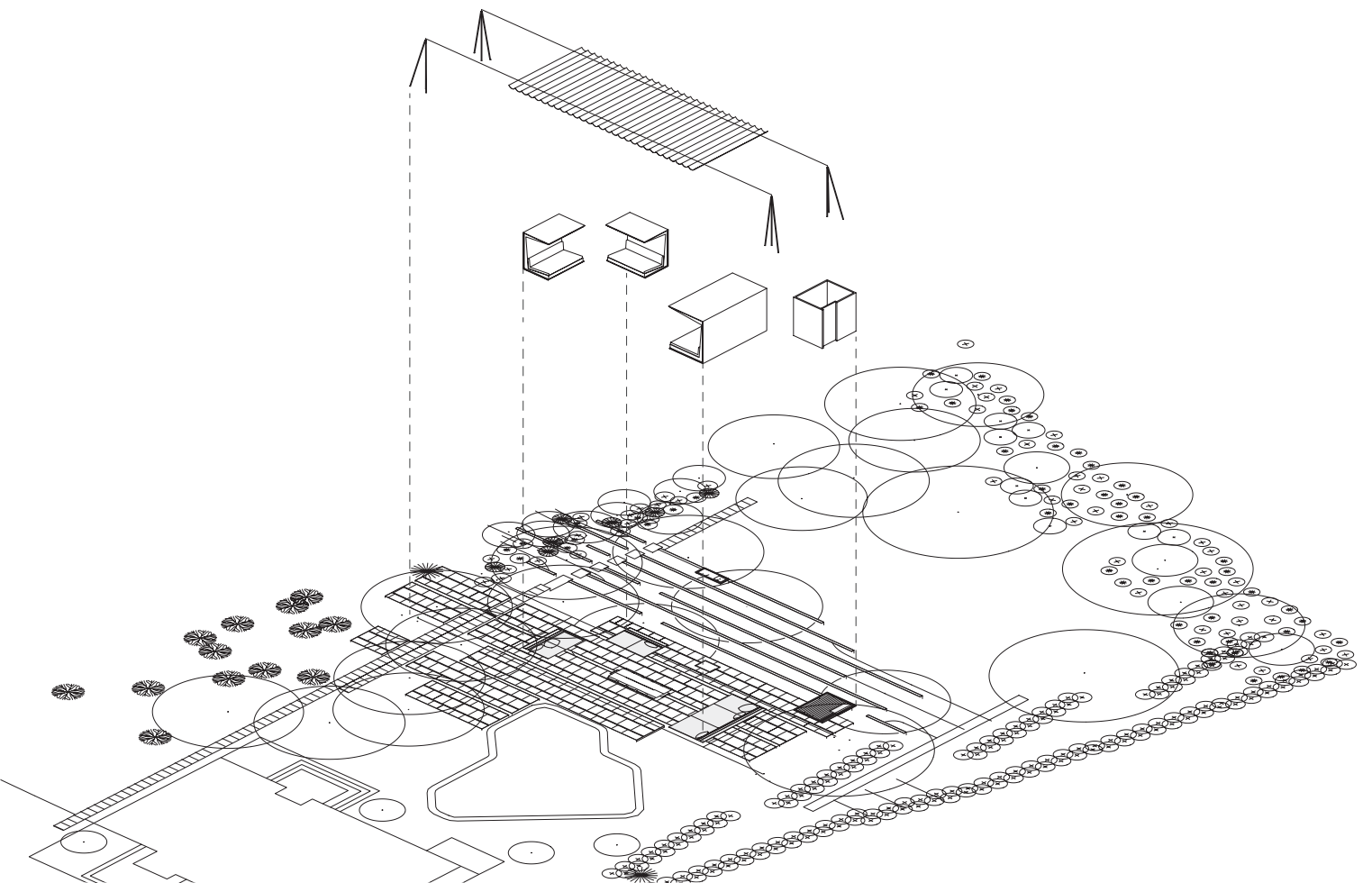
Stone wall and teak counter



Wood lattice



Solar Canopy fabric



Outdoor Pool Pavilion, Westport, Connecticut, 2008-2009. Outdoor furniture, shower, and solar canopy that pre-fabricated offsite during landscape construction. The architecture is positioned to form a room around a pool, situated within a dense garden and pastoral meadow-like yard.

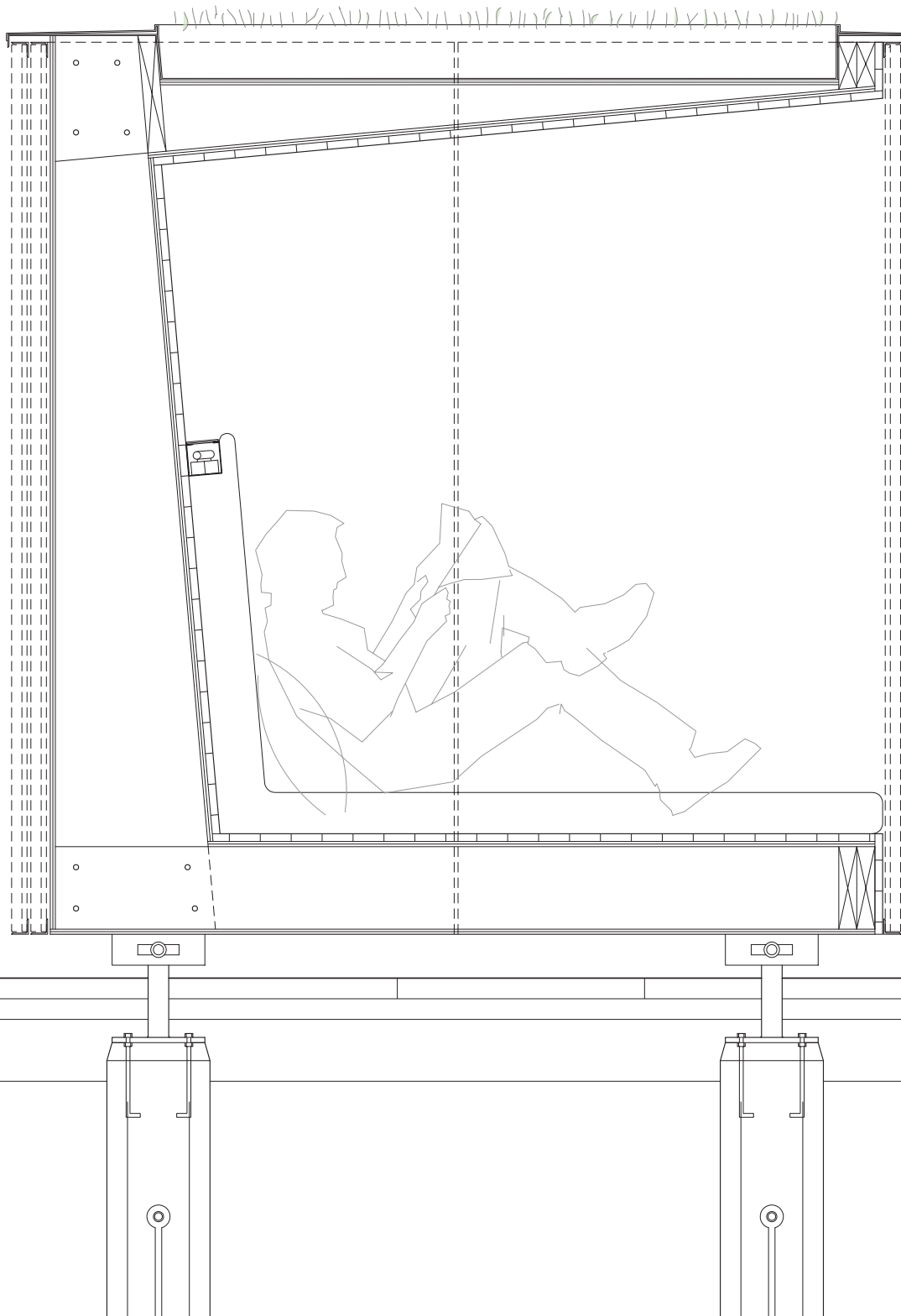
The furniture pieces are constructed of laminated veneer lumber (LVL) structural ribs and sheathed in a tight match joint oak siding. An intricately woven wood lattice screen shrouds the boxes in the winter transforming them from outdoor furniture to night time lanterns.

The canopy was sewn by an industrial sail company and hung using stainless steel wire rope and marine blocks and shackles. The shade manually retracts into three bays with variable summer sun and demounts along with the columns to store during the winter months.

Project & Construction Manager, Schematic Design -
Construction Administration
235 SF (22 SQM)

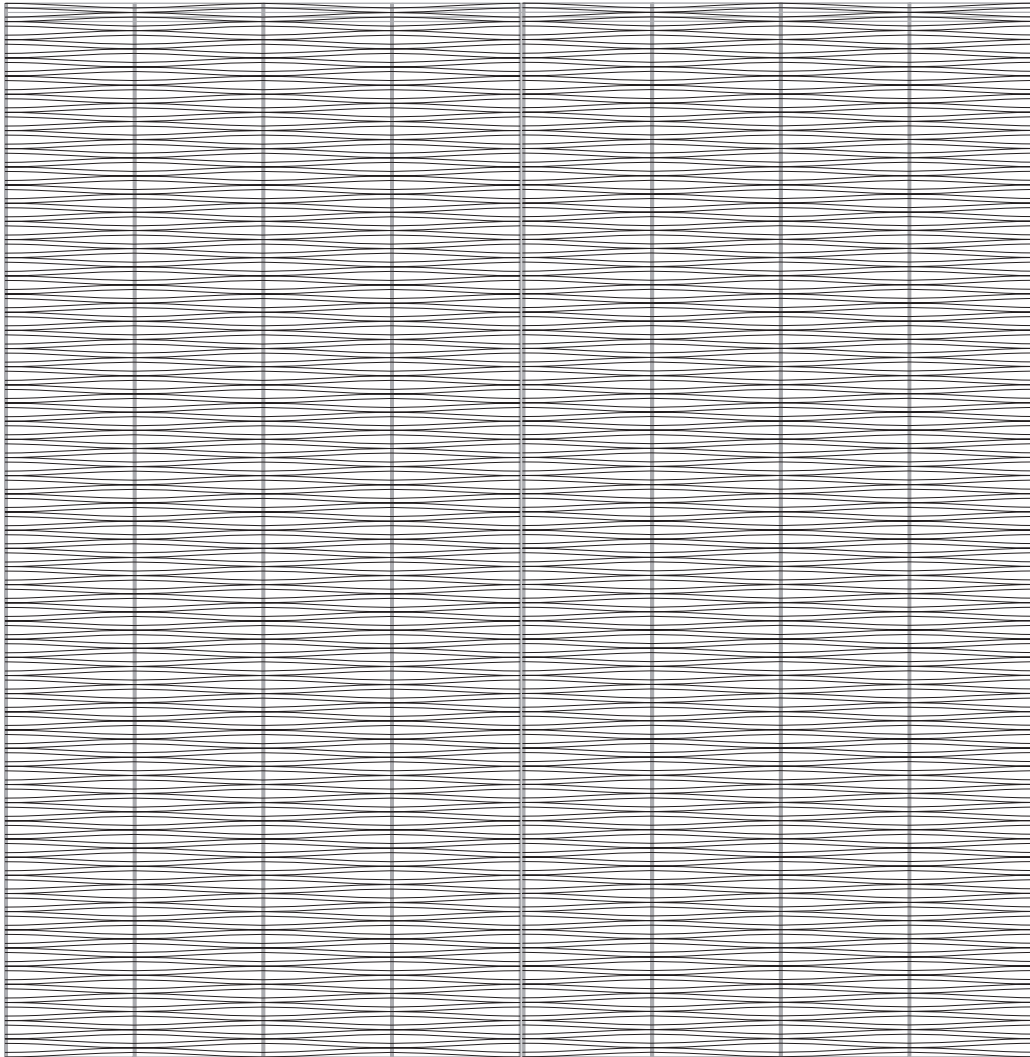
***Architect Magazine "Annual Design Review" merit award, 2010**

GOA Gray Organschi Architecture w/ Reed Hildebrand



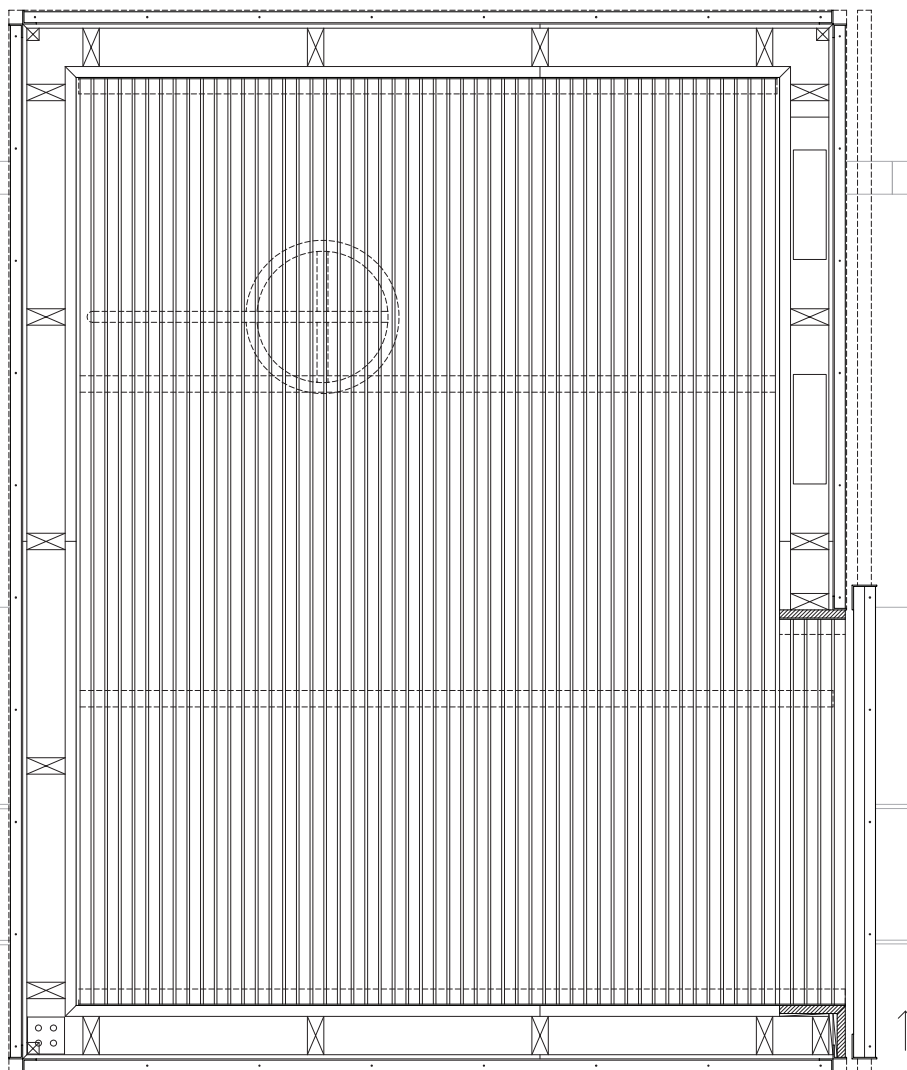
Outdoor furniture section



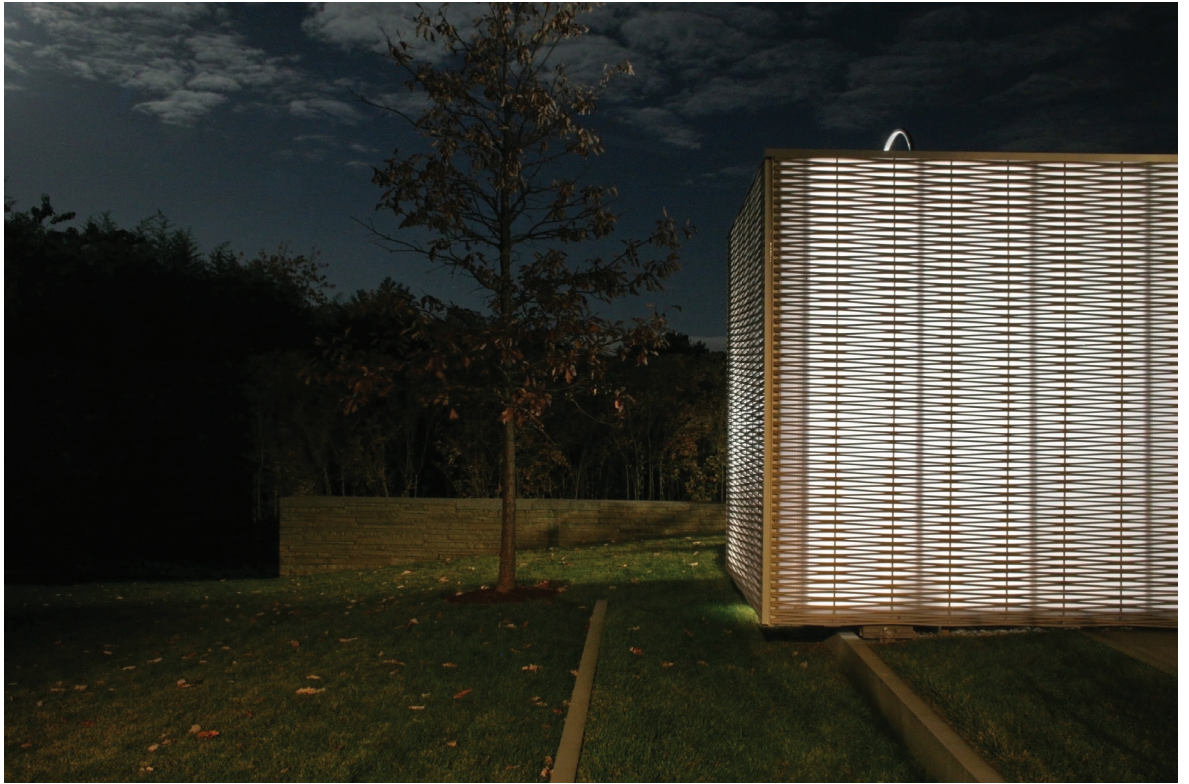


Wood lattice elevation
Enclosed furniture pieces (*opposite*)



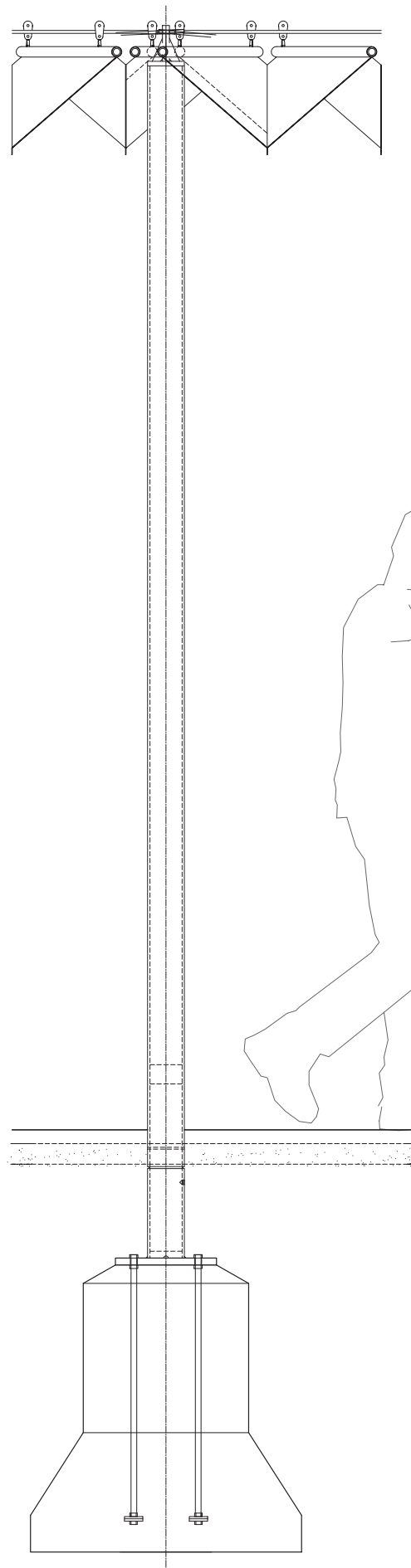
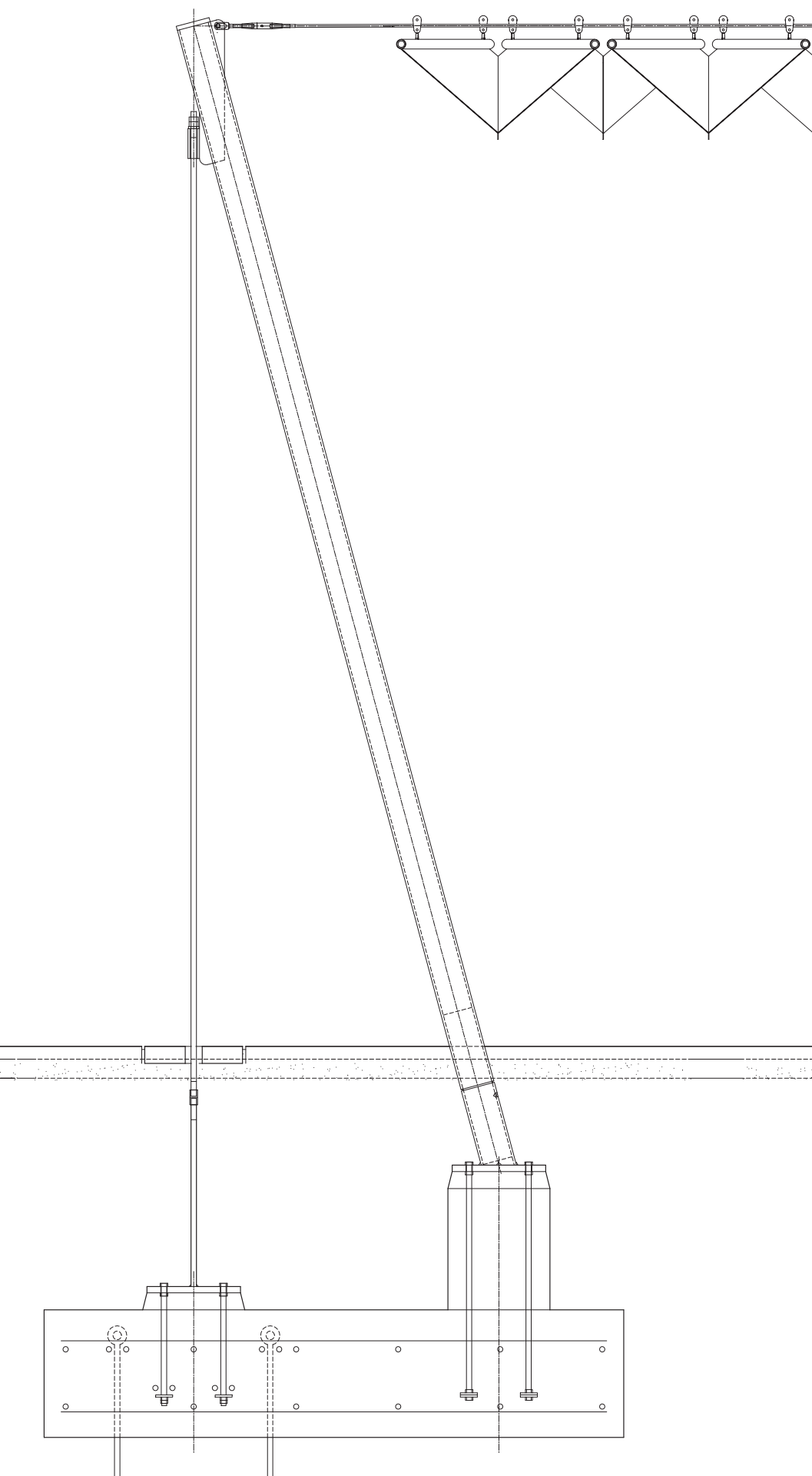


Outdoor shower Plan
Outdoor shower and terraced landscape (*opposite*)



Outdoor shower at night
(Image Credit: Bo Crockett)





Solar canopy shade and structure
View to backyard landscape (*opposite*)

